



**Custom made LUXE-LINE doors,
quality design offering endless possibilities**

Quality as standard, completely custom made

Whether you are looking for a user-friendly side hinged door for your home or building, or for a side door that perfectly matches your garage or industrial door; the Luxe-Line offers a solution for every situation.

The Luxe-Line is a versatile door that is pre-eminently suitable for both residential and industrial applications. The entire range of panels from the sectional doors programme can be used as filling for the thermally separated aluminium Luxe-Line profiles. This allows us to produce an individual door, made to measure and matching your wishes.



Guaranteed to create the right impression

Are you looking for a classical or a modern door? Or would you prefer an industrial or trendy look? The enormous range of designs, textures and colours give your Luxe-Line the impression you desire, always.

DOOR FRAME

The basis of every Luxe-Line is a high-quality aluminium frame, which as standard has an ANO or RAL 9016 powder coated finish. The frame is 58 mm thick and thermally separated, which completely eliminates condensation and thermal bridges.

FILLING

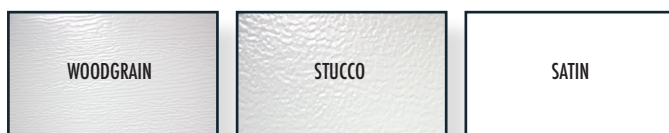
The standard filling for the door frame consists of 40-mm steel sandwich panels. The galvanised panels have a hard foam core.

It is also possible to install glazed panels in the profiles for more light. To create the right look for your home, the panels can also be installed vertically.

The following fillings are available:

HIGH-LINE PANELS

40-mm steel sandwich panels, as standard in RAL 9016 with various surface textures and designs.



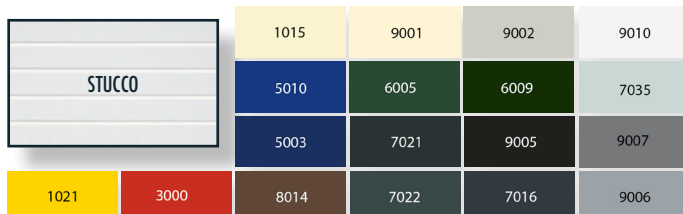
WOOD-LINE PANELS

40-mm steel sandwich panels with an authentic 'wood' look in various designs.



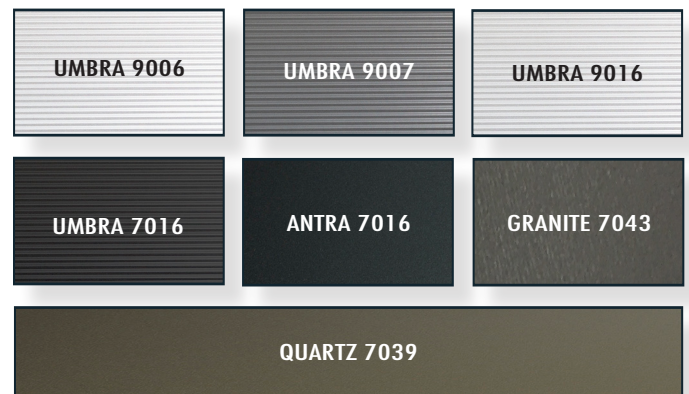
COLOUR LINE STUCCO / S40

40-mm steel sandwich panels in STUCCO with horizontal lining and available in 18 standard colours.



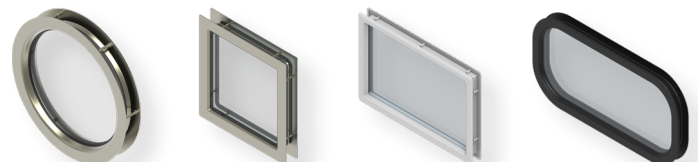
DESIGN-LINE PANELS

40-mm steel sandwich panels in various colours and surface textures



WINDOWS

The Luxe-Line can be fitted with various types of window. A selection from the product range:



GLAZED FILLING

The Luxe-Line profiles can be partially or completely glazed. You can choose from various types of glass, including HR++ or satinised glass. You can also specify many other things. For instance, you can specify whether the glazed panels should be installed horizontally or vertically in the door. And you can choose whether to fit a (fully) glazed door with or without mullions.

COLOUR

The standard powder-coated, aluminium door frame is supplied in RAL 9016 or ANO, just like the standard filling. If you would like another colour for the door frame or the filling this is possible for a small surcharge. After all, the colour should match the colours used on your house or building.



Luxe-Line Single; if you go for appearance and comfort

The Luxe-Line is the perfect alternative for a door with a pass door. An alternative with improved insulation and ease of use. The Luxe-Line Single can be easily combined with, for instance, an existing garage door, but is also a high-quality alternative for all external doors in your garage or building.

The Luxe-Line Single is only produced to specification and is created as standard from aluminium profiles combined with 40-mm sandwich panels. In addition to panels, you can also choose to fit glazing or a window to allow light to enter.

The various installation options allow the Luxe-Line Single to always match your situation. It is possible to install the pass door inside or behind the daylight opening.

Making the Luxe-Line from the same panels as used in your garage door creates a coherent whole. Here, the high insulation value is an important advantage, and possibly a decisive factor in your choice.

The maximum dimensions are **Door leaf W x H**
Luxe-Line Single 1500 x 2500 mm

Is the installation height more than 2500 mm? Then you will be supplied with a fixed part for above the door.

Luxe-Line Twin: the perfect durable side hinged garage door

If you are looking for a high-quality maintenance-free side hinged door, then the Luxe-Line Twin is the right choice for you! Design, insulation and ease of use at a stroke. This Luxe-Line is excellent for use as a side hinged garage door, to adorn your home.

DESIGN AND DURABILITY

The Luxe-Line Twin has the appearance of a traditional wooden side hinged door, without the associated disadvantages. You have full control of the Luxe-Line's design, because you can choose from an almost unlimited range of colours and materials. Moreover, every Luxe-Line door is made to measure especially for you from durable materials, including aluminium and high-quality galvanised steel. As a result, your Luxe-Line door requires more or less no maintenance.

INSULATION: NO THERMAL BRIDGE!

The insulation and effective seals of your door help to prevent unnecessary heat loss, draught and condensation. To achieve this, the thick high-quality aluminium profiles are thermally separated by a plastic strip, eliminating the possibility of condensation. In addition, the 40-mm steel

sandwich panels offer optimum insulation, which keeps out the cold. The rubber profile seals provide a perfect seal and make your Luxe-Line more or less draught proof. The sill (17 mm) fits seamlessly and contributes to reducing the penetration of water and air.

EASE OF USE

The Luxe-Line Twin can be designed to make your life easy, for instance you can determine on which side you want the pass door to be installed. If desired, you can order the Luxe-Line Twin with asymmetrical door leaves for an even larger entrance. As standard, the pass door section is fitted with door handles and a cylinder lock, while the fixed leaf is fitted with two sliding bolts. Of course, both door leaves can be opened at the same time. For your security, the door can optionally be fitted with a multi-point lock or a thumb turn cylinder lock.



Perfect alignment

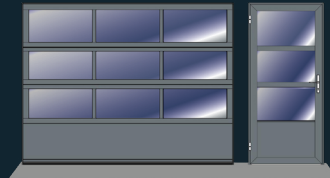
The Luxe-Line offers an appropriate and aesthetic solution in every situation. The properties of the Luxe-Line can be used to create any desired line pattern between the doors.

For example, are you looking for a solution that allows daylight to enter? Then you can choose to have windows in both the residential or industrial door and in the Luxe-Line Single, which completely match each other.

Additional light can also be realised by using one or more glazed sections. The Luxe-Line can match this seamlessly.



Aligned with overhead door with glazed section



Aligned with glazed overhead door with blank bottom section

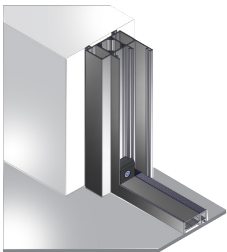


Aligned with the overhead door

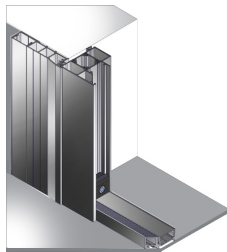
Installation options

The six different installation profiles offer an optimum solution for any situation.

Can always be appropriately and quickly installed.



A: Installation in-between daylight



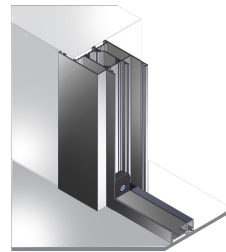
B: Installation in-between daylight opening using a broad mounting profile



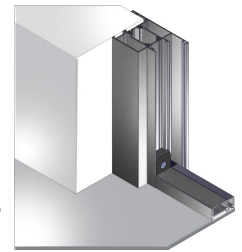
C: Installation behind the clear opening using a narrow mounting profile



D: Installation in-between daylight opening using a narrow mounting profile



E: Installation in-between daylight opening using an interior cover strip

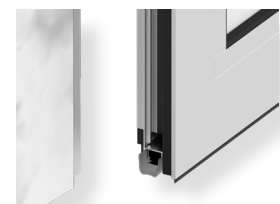


F: Installation in-between daylight opening using an exterior cover strip

All Luxe-Line doors are fitted as standard with a 17-mm sill to prevent air and water penetrating. The installation options also include installation without sill, then the door will have as a drop seal.



Threshold



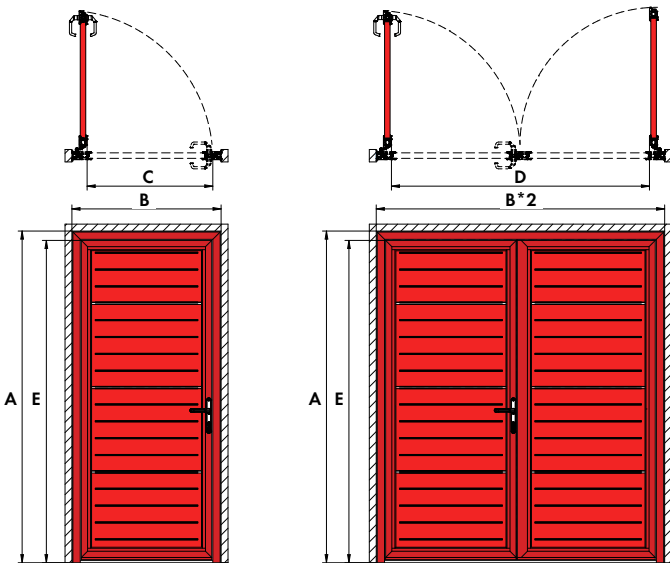
Drop seal

Technical data

To make the right choice, the technical data below can be important.
The Luxe-Line door meets all of the specified technical CE standards.

Filling dimensions LLC - Installation options A/B/C/D

SINGLE Door		
Height of leaf	Width of leaf	
	Double safety glass	Other fillings
A > 2000 mm	B max. = 1150	B max. = 1350
A > 2300 mm	B max. = 1250	B max. = 1350
A > 2500 mm	B max. = 1250	B max. = 1500
TWIN Door		
	Width of leaf	
	Double safety glass	Other fillings
	B + B max. = 2000 mm	B + B max. = 3000 mm
C = Daylight opening width (B) - 170 mm		
D = B*2 - 220 mm		
E = Daylight opening height - 78 mm		



Insulation value Luxe-Line Single and Twin

Luxe-Line Single - 900 x 2300 mm	
Panel filling	1,28 W/m²k
Double safety glass	2,96 W/m²k
Luxe-Line Twin - 2000 x 2300 mm	
Panel filling	0,91 W/m²k
Double safety glass	2,72 W/m²k

Choose the level of security that best suits your situation

Locks	Cylinder lock	Multi-point-lock	Outside operation	Inside operation
Euro Narrow lock				
Euro Anti-panic lock B				
Euro Anti-panic lock E				
Kaba Narrow lock				
Kaba Anti-panic lock B				
Kaba Anti-panic lock E				

* Possible with core pulling protection.



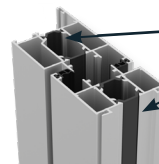
All doors are fitted with adjustable hinges to allow them to be perfectly adjusted.



A doorstop, which can be used to hold your door open in any position, is available as an optional extra.

Filling dimensions LLC - Installation options E / F

SINGLE Door		
Height of leaf	Width of leaf	
	Double safety glass	Other fillings
A > 2000 mm	B max. = 1150	B max. = 1350
A > 2300 mm	B max. = 1250	B max. = 1350
A > 2600 mm	B max. = 1250	B max. = 1550
TWIN Door		
	Width of leaf	
	Double safety glass	Other fillings
	B + B max. = 2000 mm	B + B max. = 3000 mm
C = Daylight opening width (B) - 196 mm		
D = B*2 - 246 mm		
E = Daylight opening height - 91 mm		



High insulation value, in part thanks to the thermally separated Luxe-Line aluminium profiles.



Our Luxe-Line doors are professionally made to measure. The production department uses processes that are fully automated, but retain flexibility. Accurately programmed machines guarantee exact dimensioning and check the processes to the millimetre.

Of course, we only use high-quality materials in our production process.

After all, quality and custom-made solutions are our standard.